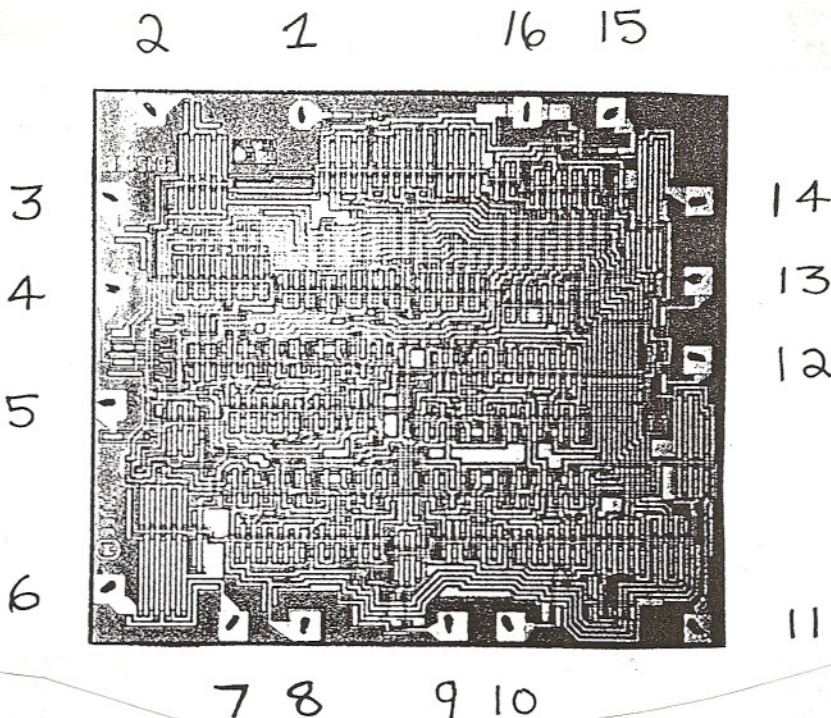




# Sierra Components, Inc.

2222 Park Place Building 3 Suite E • Minden, Nevada 89423

Phone: 775.783.4940 Fax: 775.783.4947




**Topside Metal: Aluminum**

**Backside: Silion**

**Backside Potential: VDD**

**Mask Ref:**

**Bond Pads: .004" Min.**

APPROVED BY:   
MFG: T.I. (Harris)

**DIE SIZE: .073" X .082"**  
**THICKNESS: .011" ±.001**

**DATE: 2/15/01**  
**P/N: CD4516B**